

MORNING EQUITY REPORT

TECHNICAL OUTLOOK

- Benchmark index traded volatile before closing with 0.21% cut at 24148 level on Friday. Banking index underperformed the benchmark index as it closed with 0.68% cut at 51561 level.
- India VIX closed with 3.15% cut at 14.47 level.
- Among Sectors NIFTYIT outperformed the benchmark index as it closed with 0.71% gain while NIFTYREALTY underperformed as it closed with 2.90% cut.
- Broader market underperformed the benchmark index as both MIDCAP index and SMALLCAP index closed with 1.33% and 1.70% cut respectively.
- Advance/Decline ratio was in favour of declines and cash turnover was lower than the 5-day average. FII were net sellers while DII were net buyers in the cash segment.
- European markets (DAX) closed lower while US markets (DJIA) closed higher on Friday. Asian Markets are trading lower today.

Intraday Market Outlook

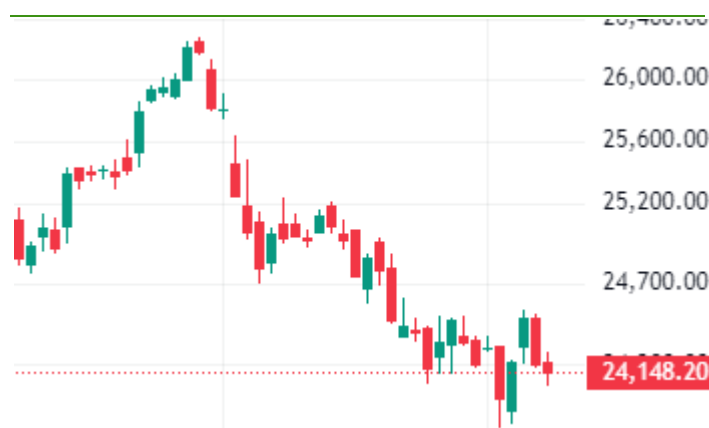
- Benchmark index is likely to trade volatile today. Index has support at 24000 - 23950 level and resistance at 24350 - 24400 level.
- Banking index is likely to perform in line with benchmark index today with support at 51200 - 51000 level and resistance at 52000 - 52200 level.
- NESTLEIND closed with a positive candlestick pattern and it is likely to trade with a positive bias today.

PIVOT TABLE

| INDEX | S2 | S1 | CLOSE | R1 | R2 |
|------------|-------|-------|--------|-------|-------|
| NIFTY | 23950 | 24000 | 24,148 | 24350 | 24400 |
| BANK NIFTY | 51000 | 51200 | 51,561 | 52000 | 52200 |

Source: MNCL RESEARCH

NIFTY (Daily) Chart



BANK NIFTY (Daily) Chart



Indices

| INDEX | Close | % Change |
|---------------|--------|----------|
| CNX NIFTY | 24,148 | -0.21% |
| BANK NIFTY | 51,561 | -0.68% |
| FINNIFTY | 23,835 | -0.55% |
| NIFTYNEXT50 | 69,774 | -1.23% |
| MIDCAP SELECT | 12,521 | -0.59% |
| SENSEX | 79,486 | -0.07% |
| VIX | 14.57 | -2.45% |

Source: NSE

Sector Gainers/Losers

| INDEX | Close | % Change |
|--------------|--------|----------|
| NIFTY AUTO | 23,805 | -0.03% |
| NIFTY FMCG | 58,359 | 0.31% |
| NIFTY IT | 42,050 | 0.71% |
| NIFTY METAL | 9,309 | -0.89% |
| NIFTYPHARM | 22,542 | 0.07% |
| NIFTY REALTY | 968 | -2.90% |
| NIFTY PSE | 10,154 | -1.62% |
| NIFTYPVTBA | 25,187 | -0.35% |
| NIFTYPSUBA | 6,845 | -1.97% |
| NIFTYMIDCA | 56,352 | -1.33% |
| NIFTYSMLC | 18,446 | -1.70% |

Source: NSE

FII / DII ACTIVITY

| INDEX | Rs IN CR |
|-------|----------|
| FII | -3,404.0 |
| DII | 1,748.4 |

Source: NSE

Market Breath (Nifty 50)

| | |
|-----------|----|
| Advance | 23 |
| Decline | 27 |
| Unchanged | 0 |

Source: NSE

Turnover (Cr)

| | |
|---------------------|----------|
| Daily cash Turnover | 1,00,043 |
| 5 Days Average | 1,02,975 |

Source: NSE

STOCKS OF THE DAY

| Stock | Closing Price | % Change | Bias | S2 | S1 | PIVOT | R1 | R2 |
|-----------|---------------|----------|----------|--------|---------|---------|---------|---------|
| NESTLEIND | 2,295.7 | 1.5% | Positive | 2245.0 | 2,270.3 | 2,284.2 | 2,309.5 | 2,323.4 |

Source: NSE, MNCL Research

Note: Standard pivot and Support/Resistance are calculated based on a mathematical formula. If the stock trades above/below the pivot point (unless specified otherwise), then traders can initiate trade in that direction. We have highlighted our bias in the stock based on the Technical as well derivative data analysis.

CHART OF THE DAY

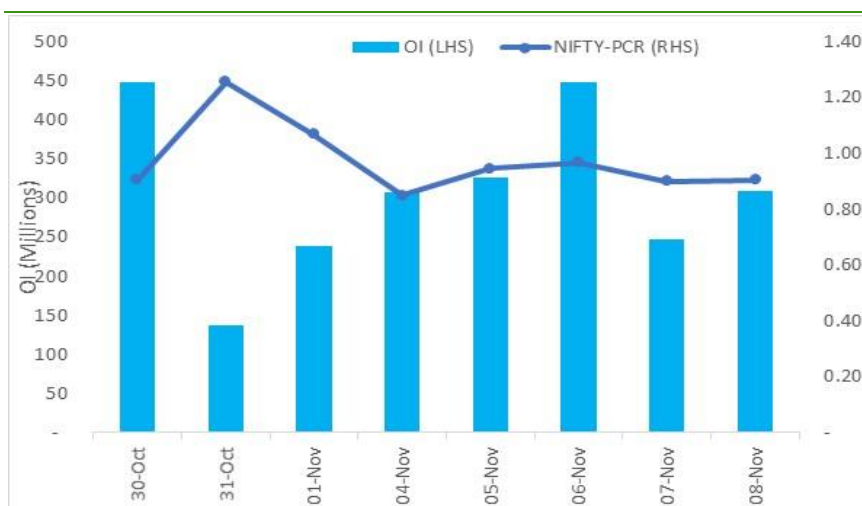
NESTLEIND



DERIVATIVE SUMMARY

- For weekly (14 Nov), max OI addition was seen at 25000 call and 22250 put. Max OI is at 25000 call and 22250 put. For Monthly expiry (28 Nov), max OI addition was seen at 24600 call and 24000 put. Max OI is at 26000 call and 23000 put.
- Cumulative Nifty PCR stands at 0.91 (08 Nov24) Vs 0.9 (07 Nov24)
- Overall FII derivatives data is negative for Friday (08 Nov24)
- In Index futures, there was net addition on the short side resulting in long exposure went down at 24.06% (08 Nov24) Vs 24.51% (07 Nov24). In Index options, there was net addition in call options - long side and net addition in put options - long side.

Nifty PCR OI



Source: NSE, MNCL Research

Index Derivative data (28 Nov Expiry)

| SYMBOL | Nifty | Banknifty |
|-----------------------|-------|-----------|
| Closing Price | 24148 | 51561 |
| Max OI Call | 26000 | 55000 |
| Max OI Put | 23000 | 55000 |
| Max change in OI Call | 24600 | 52000 |
| Max change in OI Put | 24000 | 48500 |
| PCR (Cumulative) | 0.91 | 0.70 |

Source: NSE, MNCL Research

EQUITY RESEARCH TEAM

| Name | Designation | Email | Landline No. |
|---------------|--|--|--------------|
| Amit Jain | Senior Vice President (Head - Retail Research) | amit.jain1@mnclgroup.com | 011-40851320 |
| Arpan Shah | Senior Research Analyst | arpan.shah@mnclgroup.com | 079-26666504 |
| Ketan Kaushik | Derivative Analyst | ketan.kaushik@mnclgroup.com | 0141-4007235 |

For Disclaimer & Risk factors please [click here](#)

Monarch Network Capital Ltd. (www.mnclgroup.com)

Office: - 9th Floor, Atlanta Centre, Sonawala Lane, Opp. UdyogBhavan, Goregaon (E), Mumbai 400 063. Tel No.: 022 30641600